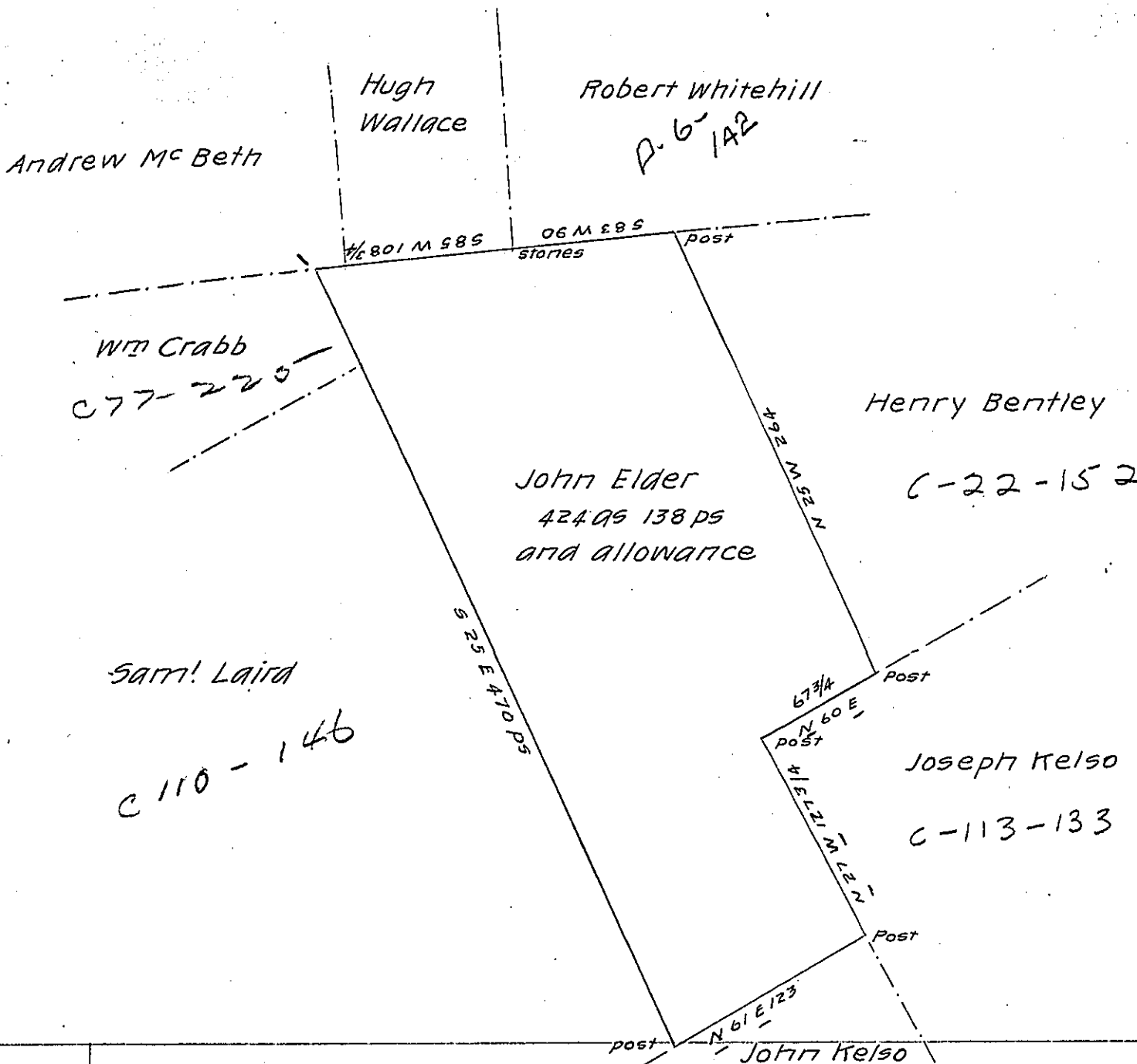


UPSIDE DOWN
REVERSE ALL
COURSES
TO
RECIPROCAL



Wm Crabb
C 77-225

Saml Laird
C 110-146

John Elder
424 as 138 ps
and allowance

Henry Bentley
C-22-152

Joseph Kelso
C-113-133

John Kelso
C 113-132

A Draught of a Tract of Land Situate in Rye Township Cum-
berland County, Containing 424 as, 138 ps and the usual allow-
ance of six P. Cent for Roads &c Surveyed the 21st Day of August
1794, to John Elder in pursuance of a Warrant dated the first
Day of February 1794.

I certify that the above is a Copy of a Survey remaining in
the D.S. office, Surd by or under the Direction of Saml Lyon D.S.

August 31st 1807 Wm Wheeler D.S.

To Saml Cochran Esq. S.G.

IN TESTIMONY that the above is a copy of the original remaining on file in
the Department of Internal Affairs of Pennsylvania, made
conformably to an Act of Assembly approved the 16th day of
February, 1833, I have hereunto set my Hand and caused
the Seal of said Department to be affixed at Harrisburg,
this thirteenth day of September 1904

Isaac P. Brown
Secretary of Internal Affairs.